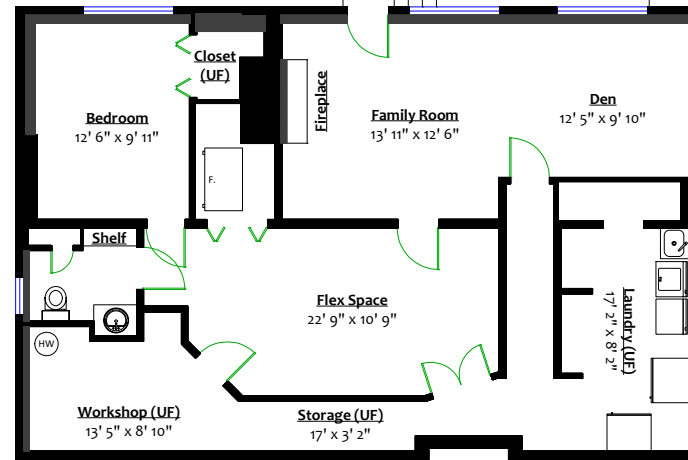
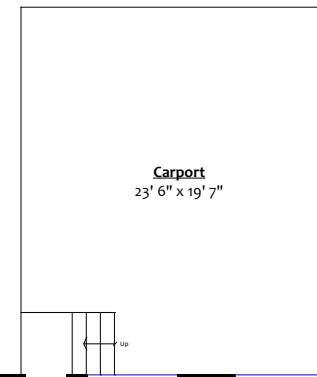


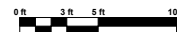
**MAIN LEVEL**  
Floor Area: 1,296 Sq. Ft.

**1559 Rita Place,  
Port Coquitlam, B.C.**

<b>Totals**</b>			
Main Level:	1,296 sq. ft.	Porch:	18 sq. ft.
Lower Level:	889 sq. ft.	Side Porch:	58 sq. ft.
Total (fin.):	2,185 sq. ft.	Deck:	483 sq. ft.
Lower Level (UF):	380 sq. ft.	Carport:	459 sq. ft.
Grand Total:	2,565 sq. ft.	Total:	1,018 sq. ft.



**LOWER LEVEL**  
Floor Area: 889 Sq. Ft.



\*\* Approx. based on interior measurements to exterior walls.  
\*\* Total square footage not taken from original blueprints.