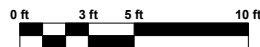
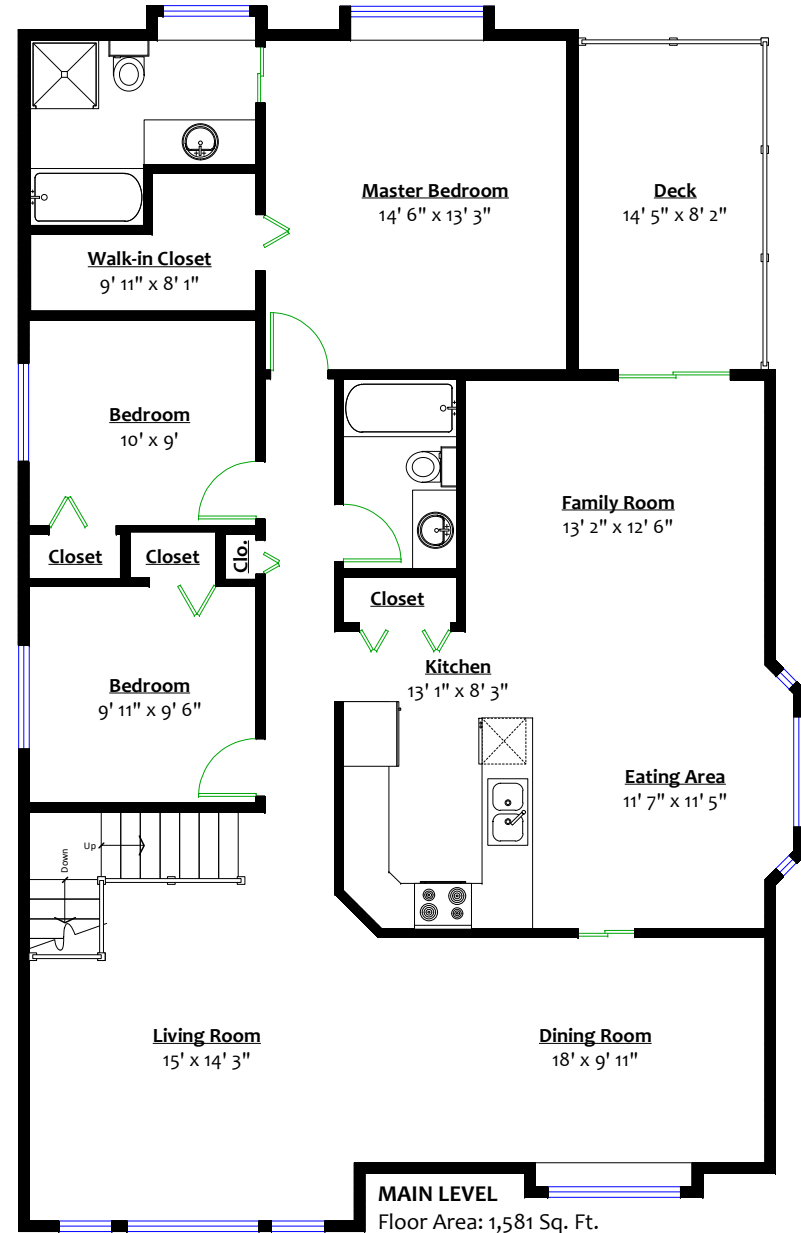
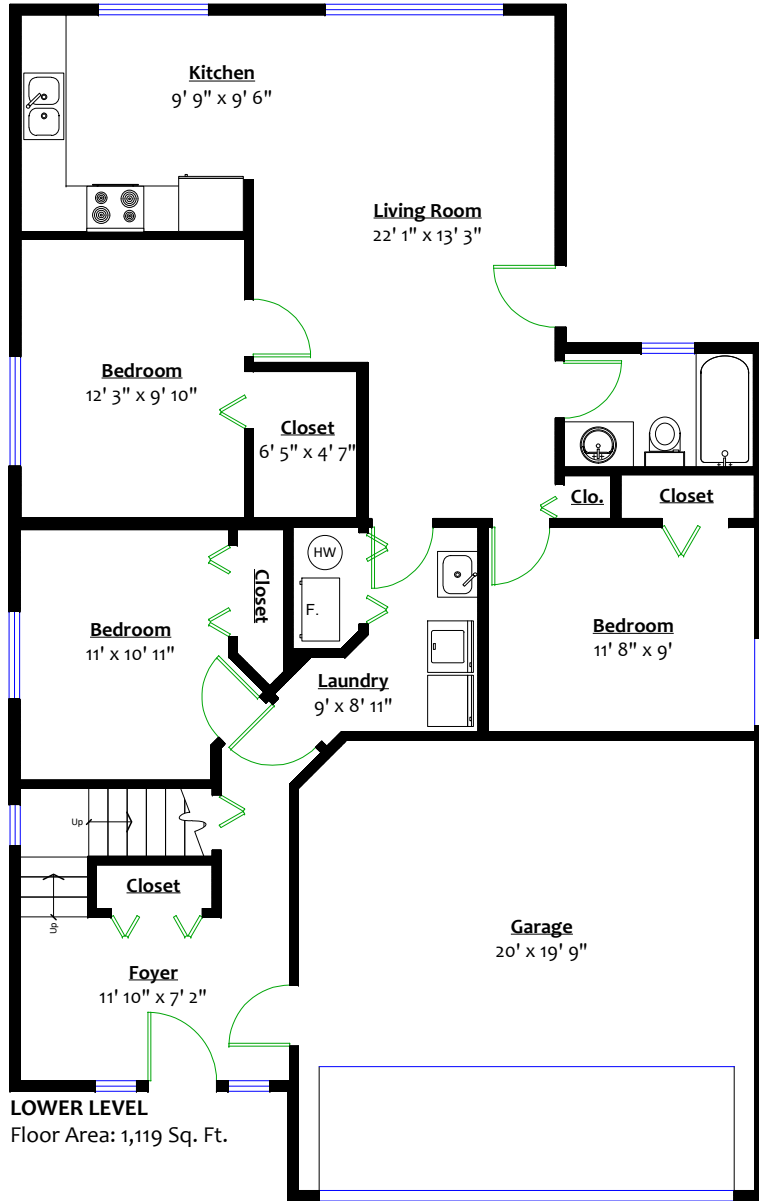


**3285 Wellington Court,
Coquitlam, B.C.**

Colin Thornton 
604.942.0606
colinthorntonrealestate@gmail.com

Totals**

Main Level:	1,581 sq. ft.	Deck:	117 sq. ft.
Lower Level:	1,119 sq. ft.	Garage:	426 sq. ft.
Total:	2,700 sq. ft.	Total:	543 sq. ft.



** Approx. based on interior measurements to exterior walls
** Total square footage not taken from original blueprints